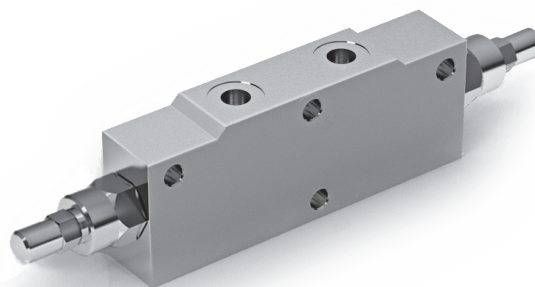


► Codice ordinazione
Ordering code

Zawór przeciążeniowy hamujący dwustronny 3/8" 60-350 bar

1	2	3	4	5
EHVCD	*	*	*	*

1	Valvola di bilanciamento doppio effetto centro aperto corpo in acciaio Double counterbalance valve center open steel body	EHVCD						
2	Dimensio Size	<table border="1"> <tr> <td>BSPP 1/4</td> <td>01</td> </tr> <tr> <td>BSPP 3/8</td> <td>02</td> </tr> <tr> <td>BSPP 1/2</td> <td>03</td> </tr> </table>	BSPP 1/4	01	BSPP 3/8	02	BSPP 1/2	03
BSPP 1/4	01							
BSPP 3/8	02							
BSPP 1/2	03							
3	Compa taratura Setting range	<table border="1"> <tr> <td>Molla Spring 30/210 Bar</td> <td>A</td> </tr> <tr> <td>Molla Spring 60/350 Bar</td> <td>B</td> </tr> </table>	Molla Spring 30/210 Bar	A	Molla Spring 60/350 Bar	B		
Molla Spring 30/210 Bar	A							
Molla Spring 60/350 Bar	B							
4	Materiale Material	Acciaio + Zincatura / Steel + Zinc Plating S						
5	Rapporto Di Pilotaggio Pilot Ratio	<table border="1"> <tr> <td>1:4,25 Standard</td> <td>-</td> </tr> <tr> <td>1:8</td> <td>8</td> </tr> </table>	1:4,25 Standard	-	1:8	8		
1:4,25 Standard	-							
1:8	8							



► Prodotti in scokk
Stock products

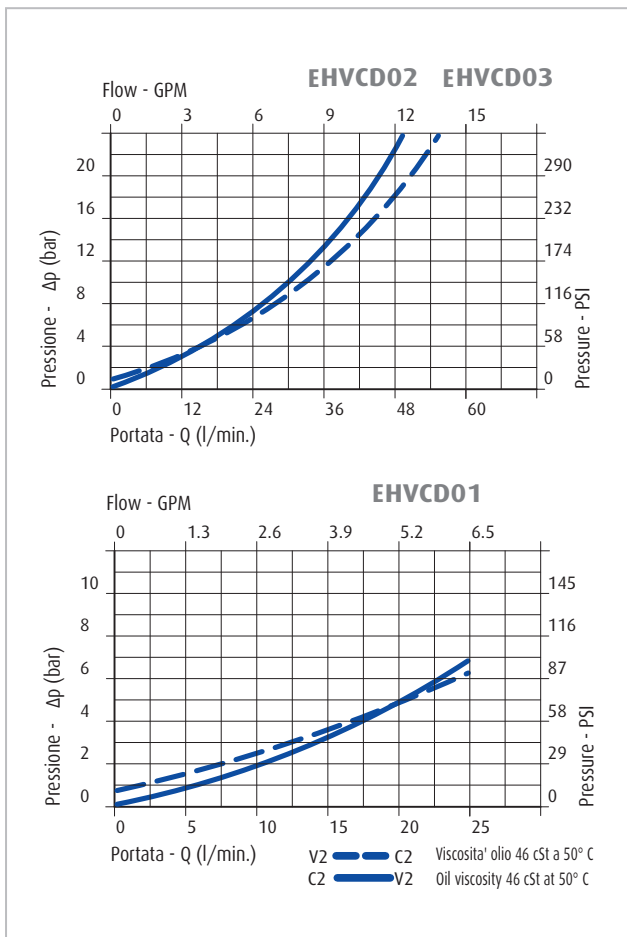
EHVCD02BS	3/8" / 30-210 bar / Steel body
EHVCD03BS	1/2" / 30-210 bar / Steel body

Si prega di contattare per altri prodotti - Please contact for other products.

► Caratteristiche
Performances

Portata min/max	Min/max flow-rate	l/min-GPM	1/60 - 0.26/15.9
Pressione di lavoro max	Max working pressure		450 bar 6525 PSI
Pressione max di taratura	Max setting pressure		350 bar 5075 PSI
Temperatura ambiente	Room temperature	°C	-30 +50
Temperatura olio	Oil temperature	°C	-30 +80
Filtraggio consigliato	Recommended Filtration	micron	30

► Diagramma Prede Di Carico
Pressure Drop Curves



► Schema idraulico
Hydraulic circuit

