

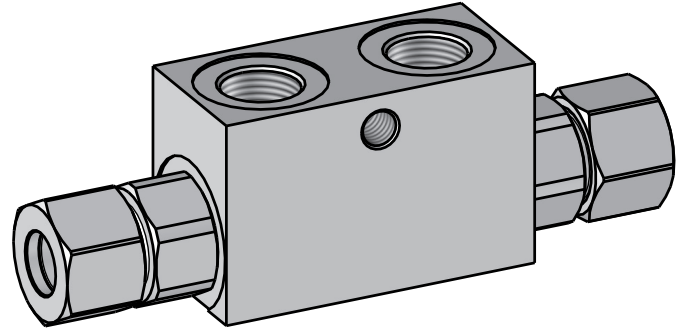
Zawór zwrotny sterowany dwustronny 1/2" 6 bar

► Codice ordinazione
Ordering code

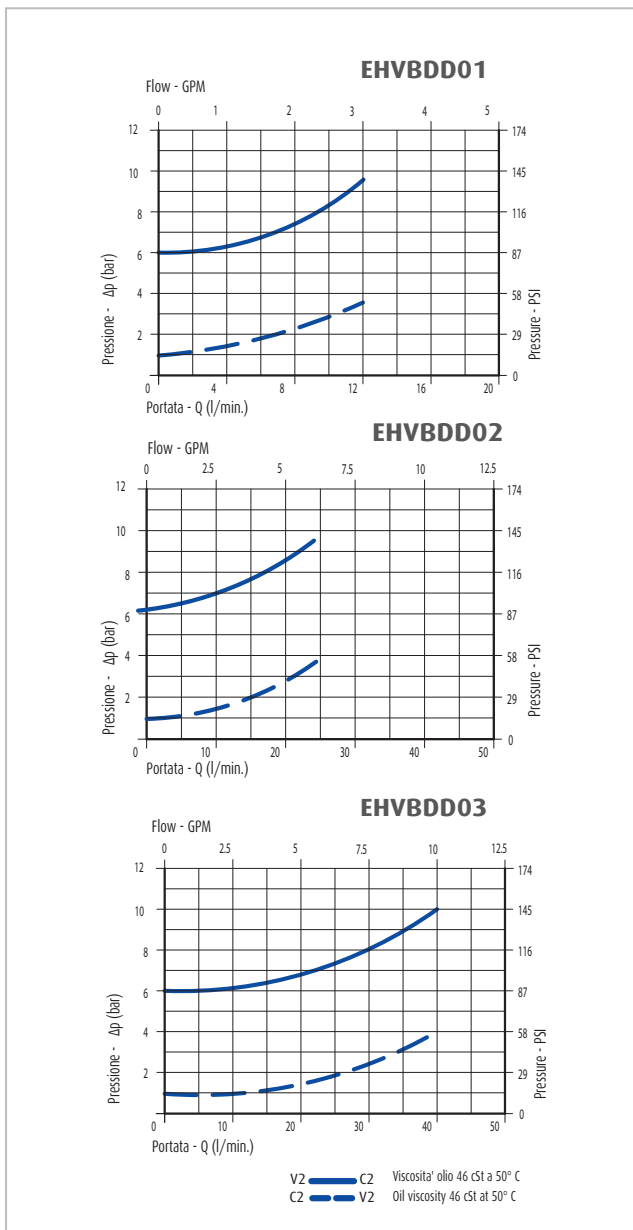


1	2	3	4	5
EHVBD	*	*	*	*

1	Valvola di blocco pilotata a doppio effetto - DIN 2353 Double pilot operated check valves - DIN 2353	EHVBD	
2	Dimensione Size	1/4" GAS (BSPP)	01
		3/8" GAS (BSPP)	02
		3/8" GAS (BSPP)	025
		1/2" GAS (BSPP)	03
3	Inizio apertura Cracking pressure	1 bar	N
		6 bar	P
4	Materiale Material	Acciaio + Zincatura Steel + Zinc Plating	S
5	Rapporto di pilotaggio Pilot ratio	1:5 standard	-



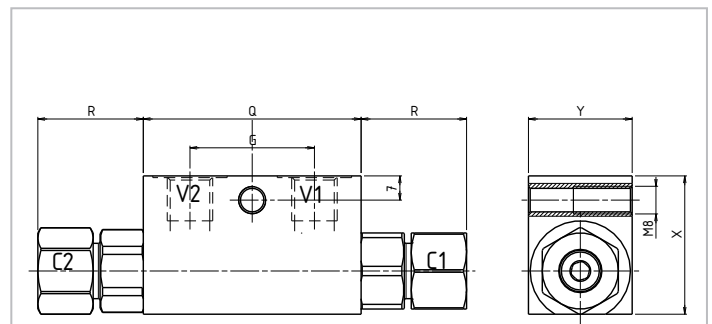
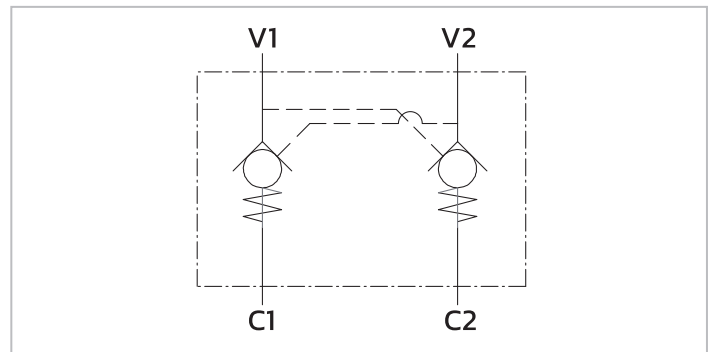
► Diagramma Perdite Di Carico
Pressure Drop Curves



► Caratteristiche
Characteristics

Portata min/max Min/max flow-rate	l/min-GPM	Diagramma
Pressione di lavoro max Max working pressure	-	350 bar 5075 PSI
Temperatura ambiente Room temperature	°C	-30 +50
Temperatura olio Oil temperature	°C	-30 +80
Filtraggio consigliato Recommended Filtration	micron	30 ÷ 50

► Schema idraulico
Hydraulic circuit



	X	Y	Q	G	R	PORTS	C1 = C2
01	40	30	63	36	30,5	1/4" GAS	L12 (M18x1,5)
02	40	30	63	34	30,5	3/8" GAS	L12 (M18x1,5)
025	40	30	63	36	30,5	3/8" GAS	L12 (M18x1,5)
03	45	35	82	45	37,5	1/2" GAS	L15 (M22x1,5)