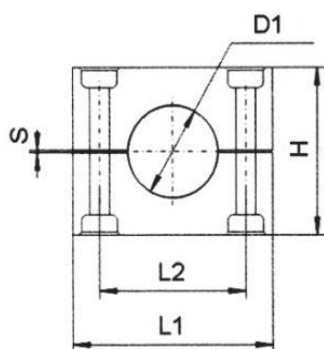
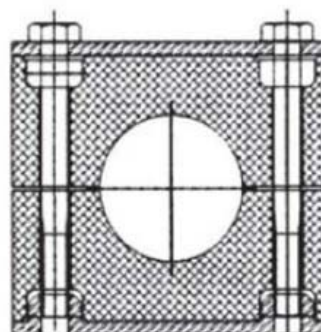


Uchwyty do rur hydraulicznych / Pipe Clamps

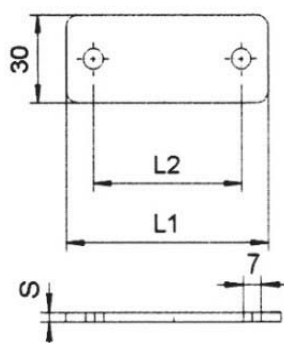
Wersja lekka / Light Pipe Clamp

Application	For permanent installation of pipes/tubes
Users	Universal
Standard	DIN 3015
Installation	Weld plate or Rail nut
Combination	Vertical, parallel, straight or other direction
Remarks	A standard complete set of clamps consists of: 1 pcs. Pipe clamp body 1 pcs. Upper cover plate 1 pcs. Lower welding plate 2szt śrub mocujących / 2 pcs. Bolts
Material	The body can be polypropylene(PP) or polyamide(PA) and aluminum, the cover plate and the weld plate can be carbon steel with zinc plated and stainless steel 304 or 316

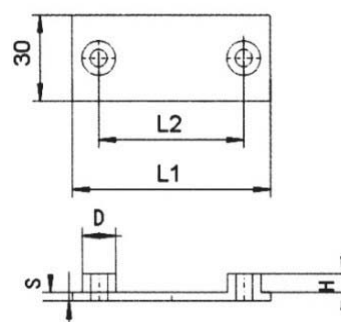
The working temperature of engineering polypropylene is -30°C - $+90^{\circ}\text{C}$
 The working temperature of engineering polyamide is -40°C - $+180^{\circ}\text{C}$



Pipe clamp board
Korpus



Upper cover plate
Płytką górną



Lower welding plate
Płytką dolną



Bolt
Śruba

