

P12

- MAX DIAM. 25 mm (0.9")
- DIE OPENING: $\phi + 21$ mm ($\phi + 0.827$ ")
- L*W*H: 500*180*130mm
- Weight: 12KG

2 199 zł + VAT



P12

P16HP

- 1" Hydraulic Hose
- Crimping range up to 45mm
- Hand Pump
- Opening: + 20mm
- Dies: 10 12 14 16 19 23 27 31
- L*W*H: 330*400*280mm
- Weight: 36KG

7500 zł + VAT



P16HP

bestseller

P16HPS

- 1"3 wire Hydraulic Hose
- Crimping range up to 45mm
- Crimping Force: 955KN
- Opening: +20mm
- Dies: 10 12 14 16 19 23 27 31
- * Optional Die Sets Upon Request
- L*W*H: 330*400*280mm
- Weight: 40KG

8 200 zł + VAT



P16HPS

P16AP Ultra

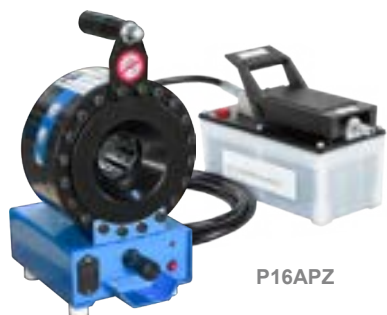
- 1"3 wire Hydraulic Hose
- Crimping range up to 45mm
- Enerpac Air Pump (FAST)
- Opening: + 20mm
- Dies: 10 12 14 16 19 23 27 31
- L*W*H: 280*300*250mm
- Weight: 45KG



P16AP Ultra

P16APZ

- 1"3 wire Hydraulic Hose
- Crimping range up to 45mm
- Master Die Length: 64mm
- Opening: +20mm
- L*W*H: 170*210*400mm
- Weight: 18KG



P16APZ

P16HPZ

- 1"3 wire Hydraulic Hose
- Crimping range up to 45mm
- Opening: + 20mm
- Master Die Length: 64mm
- Crimping Force: 955KN
- L*W*H: 170*210*400mm
- Weight: 18KG

8300 zł + VAT



P16HPZ

P18HPZ

- 1"4SP Hydraulic Hose
- Master Die Length: 64mm
- Opening: +20mm
- Dies: 10 12 14 16 19 23 27 31 37 45
- * Optional Die Sets Upon Request
- L*W*H: 190*180*310mm
- Weight: 32KG

10 535,86 zł + VAT



P18HPZ

P18LED

- 1"4SP Hydraulic Hose
- Master Die Length: 64mm
- Opening: +20mm
- Dies: 10 12 14 16 19 23 27 31 37 45
- * Optional Die Sets Upon Request
- L*W*H: 190*180*310mm
- Weight: 32KG



P18LED

P19

- 1"4SP Hydraulic Hose
- Master Die Length: 80mm
- Opening: +28mm
- Dies: 10* 12* 14 17 20 24 28 32 36 40 44* 50* 52* 58*
- * Optional Die Sets Upon Request
- L*W*H: 600*430*520mm
- Weight: 140KG
- Voltage Option: 115/ 230V 1 Phase; 230/380V/415/440/480V/575V 3 Phase



P19

P20HP

- 1 1/2" 4SP Hydraulic Hose
- Hand Pump
- Opening: + 25mm
- Dies: 10* 12* 14 17 20 24 28 32 36 40 44 50 52* 58*
- * Optional Die Sets Upon Request
- L*W*H: 350*400*250mm
- Weight: 100KG

16 000zł + VAT



P20HP

P20HPZ

- 1 1/4" 4 wire Hydraulic Hose
- Crimping Range: 4-65
- Opening: + 25mm
- Dies: 10* 12* 14 17 20 24 28 32 36 40 44 50 52* 58*
- * Optional Die Sets Upon Request
- L*W*H: 200*250*310mm
- Weight: 45KG



P20HPZ

P20

- 1 1/2" Hydraulic Hose
- Master Die Length: 80mm
- Opening: +25mm
- Crimping Force: 1600KN
- Motor: 3KW(400V 3 Phase)
- Dies: 10* 12* 14 16 19 22 26 30 34 39 45 51* 57* 63* 69* 74* 78*
- * Optional Die Sets Upon Request
- L*W*H: 680*600*650mm
- Weight: 200KG

Germany TUV-SUD CE Approved



P20

P20Q

- 1 1/2" 4SP Hydraulic Hose
- Master Die Length: 80mm
- Crimping Range: 4-65mm
- Crimping Force: 1600KN
- Opening: +25mm
- Motor: 3KW(400V 3 Phase)
- Dies: 10* 12* 14 16 19 22 26 30 34 39 45 51* 57* 63* 69* 74* 78*
- * Optional Die Sets Upon Request
- L*W*H: 680*600*1400mm
- Weight: 270KG

18 898,95 zł + VAT



P20Q

P32

- 2" 4SP Hydraulic Hose
- Germany TUV Certified
- Optional Die Rack & Quick Change Tool
- Opening: + 33mm
- Dies: 10* 12* 14 16 19 22 26 30 34 39 45 51 57 63 69 74* 78*
- * Optional Die Sets Upon Request
- L*W*H: 680*595*650mm
- Weight: 250KG

Germany TUV-SUD CE Approved



P32

P32T

- 2" 4SP Hydraulic Hose
- Master Die Length: 80mm
- Crimping Force: 2800KN
- Opening: +32mm
- Motor: 4.0KW(400V 3 Phase)
- Dies: 10* 12* 14 16 19 22 26 30 34 39 45 51 57 63 69 74* 78*
- * Optional Die Sets Upon Request
- L*W*H: 680*630*1450mm
- Weight: 370KG

Germany TUV-SUD CE Approved



P32T

P20AP

- 1 1/2" 4SP Hydraulic Hose
- Master Die Length: 80mm
- Crimping Force: 2000KN
- Opening: +25mm
- Dies: 10* 12* 14 17 20 24 28 32 36 40 44 50 20* 58*
- * Optional Die Sets Upon Request
- L*W*H: 350*250*250mm
- Weight: 110KG

15 303,75 zł + VAT



P20AP

P20D

- 1 1/2" 4SP Hydraulic Hose
- Digital Precision Control
- 110/220V 1PH; 230V/440V/480V 3PH
- Opening: + 25mm, Quick Change System
- Dies: 10* 12* 14 16 19 22 26 30 34 39 45 51* 57* 63* 69* 74* 78*
- * Optional Die Sets Upon Request
- L*W*H: 680*600*1400mm
- Weight: 270KG

Germany TUV-SUD CE Approved

23 016,84 zł + VAT



P20D

P21Q

- 2" 4SP Hydraulic Hose
- Master Die Length: 80mm
- Crimping Range: 4-87mm
- Crimping Force: 2000KN
- Opening: +28mm
- Motor: 4KW(400V 3 Phase)
- Dies: 10* 12* 14 17 20 24 28 32 36 40 44 50 52* 58*
- * Optional Die Sets Upon Request
- L*W*H: 650*600*1250mm
- Weight: 260KG



P21Q

P32D

- Digital Precision Control
- 2" 4SP Hydraulic Hose
- 110/220V 1PH; 230V/440V/480V 3PH
- Opening: + 32mm, Quick Change System
- Dies: 10* 12* 14 16 19 22 26 30 34 39 45 51 57 63 69 74* 78*
- * Optional Die Sets Upon Request
- L*W*H: 680*600*1400mm
- Weight: 320KG

Germany TUV-SUD CE Approved

26 880 zł + VAT



P32D

P32Q

- 2" 4SP Hydraulic Hose
- 110/220V 1PH; 230V/440V/480V 3PH
- Opening: + 33mm, Quick Change System
- Dies: 10* 12* 14 16 19 22 26 30 34 39 45 51 57 63 69 74* 78*
- * Optional Die Sets Upon Request
- L*W*H: 680*600*1400mm
- Weight: 270KG

Germany TUV-SUD CE Approved

24 200 zł + VAT



P32Q

bestseller

www.sklep.hydron.com.pl

P32S

- Digital Precision Control
- 2" 4SP Hydraulic Hose
- 110/220V 1PH; 230V/440V/480V 3PH
- Opening: + 32mm, Quick Change System
- Dies: 10* 12* 14 16 19 22 26 30 34 39 45 51 57 63 69 74* 78*
- * Optional Die Sets Upon Request
- L*W*H: 680*630*1450mm
- Weight: 320KG

Germany TUV-SUD CE Approved



P32S

P38D

- 2" 6SP Hydraulic Hose
- Master Die Length: 80mm
- Crimping Force: 3500KN
- Opening: +32mm
- Motor: 4 KW(400V 3 Phase)
- Dies: 10* 12* 14 16 19 22 26 30 34 39 45 51 57 63 69 74* 78*
- * Optional Die Sets Upon Request
- L*W*H: 680*600*1430mm
- Weight: 350KG

Germany TUV-SUD CE Approved



P38D

HB450

- Up to 1 1/4" 4SP Hydraulic Hose No Axial Movement
- Digital Control or SIEMENS Touch Control
- Opening plus: +45mm
- Front Cut ideal for 90 Degree Fitting
- L*W*H: 680*600*1400mm
- Weight: 240KG



HB450

HB500

- Up to 2" 4SP Hydraulic Hose No Axial Movement
- Digital Control or SIEMENS Touch Control
- Opening plus: +50mm
- Front Cut ideal for 90 Degree Fitting
- L*W*H: 680*600*1400mm
- Weight: 270KG



HB500

P50

- 3" 4SP Hydraulic Hose
- 4.88" Industrail Hose
- Crimping Range: 4-140mm
- Opening: +60mm
- Dies: 10* 12* 14 16 19 22 26 30 34 39 45 51 57 63 69 74* 78* 84 92 100 108 116
- * Optional Die Sets Upon Request
- No axial movement of the dies during the crimping
- L*W*H: 760*650*1490mm
- Weight: 550KG

43 500 zł + VAT



P50

P51D

- 3" 4SP Hydraulic Hose
- 4.88" Industrail Hose
- Crimping Range: 4-140mm
- Opening: +40mm
- Dies: 10* 12* 14 16 19 22 26 30 34 39 45 51 57 63 69 74* 78* 84 92 100 108 116
- * Optional Die Sets Upon Request
- L*W*H: 760*650*1520mm
- Weight: 560KG

Germany TUV-SUD CE Approved

45 800 zł + VAT



P51D

H50

- 2" 4SP Hydraulic Hose
- 3.42" Industrial Hose
- Crimping range: 4-87mm
- Comfortable Crimping Position
- Motor: 4KW
- Crimping Force: 2000KN
- Dies: 10* 12* 14 16 19 22 26 30 34 39 45 51 57 63 69 74* 78*
- L*W*H: 650*600*1250mm
- Weight: 280KG

19 000 zł + VAT



H50

H60/H60E

- 2" 8SP Hydraulic Hose or 4" Industrail
- Crimping range: 4-95mm
- Opening: + 50mm/60mm
- Motor: 4KW
- Crimping Force: 4200KN

- Dies: 10* 12* 14 16 19 22 26 30 34 39 45 51 57 63 69 74* 78* 84 92 100 108 116
- Digital Control/SIEMENS touch control
- L*W*H: 840*600*1390mm
- No axial movement of the dies during the crimping
- Weight: 510KG

Germany TUV-SUD CE Approved

39 999 zł + VAT



H60/H60E

P100

- Any Hydraulic Hose
- 4" 8 wire Hose Industrial Hose
- 220V/400V/440V/480V 3PH
- Opening: + 50mm
- Dies: 10* 13* 16 19 22 26 30 34 39 45 52 57 64 69 74 78 84 92 100 108 116
- L*W*H: 800*650*900mm
- Weight: 450KG



P100

PE88

- 6" Hydraulic Hose
- Master Die Length: 200mm
- Crimping Force: 8000KN
- Opening: +80mm
- Motor: 3 phase by ABB (220/400/440/480/660V) 7.5KW
- Dies: 10* 12* 14 16 19 22 26 30 34 39 45 51 57 63 69 74* 78*
- * Optional Die Sets Upon Request
- L*W*H: 920*580*1200mm
- Weight: 1250KG



PE88

www.sklep.hydron.com.pl

FP100 (Production Crimper)

- 1 1/4" 4SH*1 piece fitting Hydraulic Hose
- Crimping Range: 4-55mm
- Opening: +35mm
- Motor: 4KW(400V 3 Phase)
- Crimping Force: 1350KN
- Dies: 10 14 20 24 28 32 40 44 50
- * Optional Die Sets Upon Request
- L*W*H: 700*580*1500mm
- Weight: 380KG



FP100

FP140 (Production Crimper)

- 2" 6SP Hydraulic Hose or 4" Industrial Hose
- Crimping Range: 4-124
- Opening: + 78mm
- New Enhanced Structuer
- No axial movement of the dies during the crimping
- Motor: 7.5KW by SIEMENS
- Crimping Force: 3600KN
- Dies: 10* 12* 14 16 19 22 26 30 34 39 45 51 57 63 69 74* 78* 84 92 100 108 116
- L*W*H: 900*1000*1600mm
- Weight: 1350KG
- TUV CE Approved

105 000 zł + VAT



FP140

FP160 (Production Crimper)

- 6" Hydraulic Hose or 7.95" Industrail Hose
- Crimping Range: 4-202mm
- Opening: +125mm
- Motor: 7.5KW(400V 3 Phase)
- Crimping Force: 6000KN
- Dies: 10* 12* 14 16 19 22 26 30 34 39 45 51 57 63 69 74* 78* 84 92 100 108 116 126 136 146 156 166 178 190
- * Optional Die Sets Upon Request
- L*W*H: 1063*1300*1780mm
- Weight: 2850KG



FP160

FP185 L (Production Crimper)

- Crimping Range in inch OD: 15"
- Crimping Range in mm OD: 440mm
- Crimping Range: 160-440 mm
- Crimping Force ton: 1000
- Opening +300mm
- Motor: 15KW by SIEMENS
- L*W*H: 3780*1780*1100mm
- Weight: 9500 KG



FP185 L

S201

- 2 1/2" Hydraulic Hose
- Light duty 6" Industrial hose
- Master Die Length: 120mm
- Crimping Force: 2400KN
- Opening: +24mm
- Motor: 4KW(400V 3 Phase)
- Dies: 10* 12* 14 16 19 22 26 30 34 39 45 51 57 63 69 74* 78* 84 92 100 108 116
- * Optional Die Sets Upon Request
- L*W*H: 780*450*1500mm
- Weight: 430KG



S201

FP120 (Production Crimper)

- 2" 6 SP/SH Hydraulic Hose
- Crimping range: 4-87mm
- Opening: + 72mm
- Quick change tool and die rack
- Dies: 10* 12* 14 16 19 22 26 30 34 39 45 51 57 63 69 74* 78*
- * Optional Die Sets Upon Request
- Voltage: 110/220V/400V/480V
- Motor: 4KW
- L*W*H: 860*1000*1600mm
- Weight: 1250KG

Germany TUV-SUD CE Approved



FP120

FP140U (Production Crimper)

- 2 1/2" Hydraulic Hose
- Crimping Range: 4-124
- Opening: + 78mm
- New Enhanced Structuer
- No axial movement of the dies during the crimping
- Motor: 7.5KW by SIEMENS
- Crimping Force: 3600KN
- Dies: 10* 12* 14 16 19 22 26 30 34 39 45 51 57 63 69 74* 78* 84 92 100 108 116
- L*W*H: 900*800*1560mm
- Weight: 900KG
- TUV CE Approved



FP140U

FP170 (Production Crimper)

- 10" Industrail Hose
- Crimping Range: 4-320mm
- Master Die Length: 190mm
- Opening: + 150mm
- Motor: 15KW by SIEMENS
- L*W*H: 1800*1000*1500mm
- Weight: 3500KG

187 000 zł + VAT



FP170

FP195 H (Production Crimper)

- Crimping Range in inch OD: 17"
- Opening: +150mm; Any Hydraulic hose
- Crimping Range: Up to 480mm
- Motor: 15KW by SIEMENS
- L*W*H: 2580*1780*1100mm
- Weight: 8500KG



FP195 H

S280

- 4" 6SP Hydraulic Hose
- 10" Industrail Hose
- Crimping Range: 4-280mm
- Opening: +50mm
- Crimping Force: 15000KN
- Motor: 7.5KW(400V 3 Phase)
- L*W*H: 800*1700*1750mm
- Weight: 1300KG

88 000 zł + VAT



S280/P320

www.sklep.hydron.com.pl

P20DC (Onsite Service)

- 1 1/2" Hydraulic Hose
- Master Die Length: 80mm
- Crimping Force: 1600KN
- Opening: +25mm
- Motor: 3KW(400V 3 Phase)
- Dies: 10* 12* 14 16 19 22 26 30 34 39 45 51* 57* 63* 69* 74* 78*
- * Optional Die Sets Upon Request
- L*W*H: 820*700*650mm
- Weight: 220KG



P20DC

P32DC (Onsite Service)

- 2" 4SP Hydraulic Hose
- Crimping Range: 4-87mm
- Master Die Length: 80mm
- Opening: +32mm
- Motor: 4 KW
- Crimping Force: 2800KN
- L*W*H: 820*700*650mm
- Weight: 220KG



P32DC

P32XD (Onsite Service)

- 2" 4SP Hydraulic Hose
- Digital Control/ SIEMENS Touch Control
- Crimping Range: 4-87mm
- Opening: +32mm
- Crimping Force: 2800KN
- Dies: 10* 12* 14 16 19 22 26 30 34 39 45 51 57 63 69 74* 78*
- * Optional Die Sets Upon Request
- Master Die Length: 80mm
- Motor: 3KW 12V/24V DC
- L*W*H: 820*700*650mm
- Weight: 135KG



P32XD

19 500 zł + VAT

C250DC (Onsite Service)

- 1 1/2" 4SP Hydraulic Hose
- Motor: 1.5KW,24V(400V 3 Phase)
- Various voltage available 230V/380V/480V 3 Phase
- 230V/115V 1 Phase
- 12V/24VDC
- L*W*H: 400*350*400mm
- Weight: 50KG



C250DC

Skórowarka / SKIVER 51AS

- 1/4" to 2" Hydraulic Hose
- Foot Pedal Control
- Double Blades Skiving
- Motor: 0.75KW(400V 3 Phase)
- L*W*H: 450*400*1400mm
- Weight: 100KG



SKIVER 51AS

Skórowarka / SKIVER 51ES

- 1/4" to 2" Hydraulic Hose
- Foot Pedal Control
- Double Blades Skiving
- Motor: 0.75KW(400V 3 Phase)
- L*W*H: 450*400*1400mm
- Weight: 100KG



SKIVER 51ES

Skórowarka / Skiver 51ESC

- 1/4" to 2" Hydraulic Hose
- Foot Pedal Control
- Double Blades Skiving
- Motor: 0.75KW(400V 3 Phase)
- L*W*H: 450*400*1400mm
- Weight: 100KG



Skiver 51ESC

bestseller

9 200 zł + VAT

P35D

- 2" Hydraulic Hose
- Master Die Length: 80mm
- Crimping Force: 3000KN
- Opening: +33mm
- Motor: 4KW(400V 3 Phase)
- Dies: 10* 12* 14 16 19 22 26 30 34 39 45 51 57 63 69 74 78
- * Optional Die Sets Upon Request
- L*W*H: 630*490*1200mm
- Weight: 292KG



P35D

Portable Tube Pre-assembly

- PRE-ASSEMBLING: 6 > 42x4 mm
- 37 FLARING: 6X4 > 42x4 mm
- Optional Air pump/ Eletrical Pump
- POWER: HAND PUMP
- L*W*H: 500*600*400mm
- Weight: 40KG



Portable Tube Pre-assembly

Tube Pre-assembly & 37 Tube Flaring

- PRE-ASSEMBLING: 6 > 42x4 mm
- 37 FLARING: 6X4 > 42x4 mm
- Optional Air pump/ Eletrical Pump
- Motor: 0.75 KW(400V 3 Phase)
- L*W*H: 430*600*270mm
- Weight: 58KG



Tube Pre-assembly & 37 Tube Flaring

Optional Flaring Modulalr

www.sklep.hydron.com.pl

Deburring Machine DM01

- Internal Deburring: 6-42mm
- External Deburring: 6-42mm
- Motor: 0.18KW
- L*W*H: 406*470*270mm
- Weight: 30KG



Deburring Machine DM01

8 200 zł + VAT

T642V

- Max capacity steel tube: 6-42mm
- Motor: 0.55KW(400V 3 Phase)
- Optional Deburring Modular
- Optional Tube Pre-assembly Modulalr
- Optional Hand pump/ Air pump version
- L*W*H: 850*5800*1100mm
- Weight: 100KG



T642V

53 000 zł + VAT

Przecinarka / C250 Cut Off Saw

- 1 1/2" 4SP Hydraulic Hose
- Motor: 1.5KW,24V(400V 3 Phase)
- Various voltage available 230V/380V/480V 3 Phase
- 230V/115V 1 Phase
- 12V/24VDC
- L*W*H: 400*350*400mm
- Weight: 50KG



C250

C300 Bench Top Hose Saw

- 2" 4SP Hydraulic Hose
- Motor: 3KW
- 300mm Blade
- L*W*H: 450*400*430mm
- Weight: 55KG



C300

bestseller

5 247,95 zł + VAT

Przecinarka C400

- 2" 4SP Hydraulic Hose
- Motor: 3KW(400V 3 Phase)
- L*W*H: 840*550*1150mm
- Weight: 150KG



C400

6733,65 zł + VAT

Przecinarka C450A

- 2" 4SP Hydraulic Hose
- Pneumatic Control
- Motor: 4KW(400V 3 Phase)
- L*W*H: 950*600*1150mm
- Weight: 180KG



C450A

Przecinarka CM75

- 2 inch 6 wire Hydraulic Hose
- 4" Industrial Hose
- Motor: 7.5KW
- L*W*H: 910*650*1400mm
- Weight: 240KG



CM75

19 588 zł + VAT

Heat Sealing Machine

- Voltage (Volts AC/Hz): 230 for 50/60
- Power Consumption (W): 3400
- Heater Temperature (°C/F°): 232/450
- Duty Cycle(%): 100
- Air Flow(L/min /CFM): 350/12
- NoiseEmission (LpA (dB)): <65
- Airflow Pressure(Pa/Inches Water): 2500/10
- L*W*H: 241*520*180mm
- Weight: 9.5KG



Heat Sealing Machine

NC20

- Fitting size up to 1 1/4 inch
- Crimping Range: 12-49mm
- Opening: + 18mm
- Master die lenght: 22mm
- Motor: 4KW
- L*W*H: 685*1000*940mm
- Weight: 285KG



NC20

NC50

- 4" Hose Size
- Crimping Range: 4-120mm
- Opening: + 24mm
- Master die lenght: 24mm
- Motor: 7.5KW by SIEMENS
- Crimping Force: 5000KN
- L*W*H main machine: 685*1000*940mm
- Weight main machine: 450KG
- Hydraulic Unit L*W*H: 600*600*850mm
- Hydraulic Unit Weight: 350KG



NC50

PROTABLE TEST BENCH

- Test Port: 1/4" NPT
- Pump Made In Germany
- Valve Made In Germany
- Test Hose up to 2"
- L*W*H: 250*300*400mm
- Weight: 25KG

14 000 zł + VAT



PROTABLE TEST BENCH

Stół do testowania węży / Hydraulic Hose Test Bench

- Testing Up to 5000 Bar
- Touch Screen Automatic Control
- Multi Step Pressure Testing
- Test Report Printer
- Quick Fill Pump
- Pump Made In Germany
- Safety Testing with Pressure Automatic Release
- Fatigue Pressue Testing Equipment upon request
- L*W*H: 2000*900*1300mm
- Weight: 200KG

26 580 zł + VAT



Hydraulic Hose Test Bench

Zakuwarka do klimatyzacji SP350

- Hose Size ID: 1 1/4
- Crimping Range: 10-46mm
- Master Die Length: 60mm
- Crimping Force: 350KN
- Opening: +25/ +50
- Motor: 4.0KW
- Dies: 10 12 14 16 19 23 27 31 36 41 47
- * Optional Die Sets Upon Request
- L*W*H: 814*782*1670mm
- Weight: 383KG

76 500 zł + VAT



SP350

Hose Rack

- 1/4" to 1 1/4" Hydraulic Hose
- 6 Layer
- Max Load 1000KG
- Self Assembly
- L*W*H: 1200*1200*2000mm
- Weight: 100KG

3 400 zł + VAT



Hose Rack

Urządzenie do montażu końcówek / Nipple Inserter

5 999,07 zł + VAT

- Nipple Pusher
- 1/4" to 2" Straight or Elbow
- All tools included
- Pneumatic Operation
- Foot pedal included
- Pushing force adjustable
- L*W*H: 560*760*200mm
- Weight: 40KG



Nipple Inserter

Licznik węży / HOSE COUNTER

- Digital Hose Counter
- Motor: 220V 1 Phase
- L*W*H: 407*255*240mm
- Weight: 14KG

2 750 zł + VAT



HOSE COUNTER

Rozwijak / Auto Hose Reel

- 1/8" - 2" Hydraulic Hose
- Voltage single phase: 230V/10A/50Hz
- AutoReel H: 9004-01-03
- Width / Height, hose stage / reel: 1200*830mm
- Base: 700*800mm
- Weight: 65KG



Auto Hose Reel

Rozwijak / Manual Hose Reel

- Hose up to 2 inch
- Max Load of reel: 500KG
- L*W*H: 1200*1200*850mm
- Weight: 60KG



Manual Hose Reel

Zestaw do czyszczenia węży / Hose Cleaner Kit 50HCK

- Capable of cleaning 1/4" through 2" hose, tube, or pipe.
- SAMWAY Launcher is supplied with a full fast Release Coupling and 360-degree Rotary Plug for maximum airflow.
- Environmentally friendly with recycled safe materials.
- Simple to use without efforts.
- SFast operation ensures high volume production purpose.

3 800 zł + VAT



Hose Cleaner Kit 50HCK

Znakowarka / Marking Hand Powered

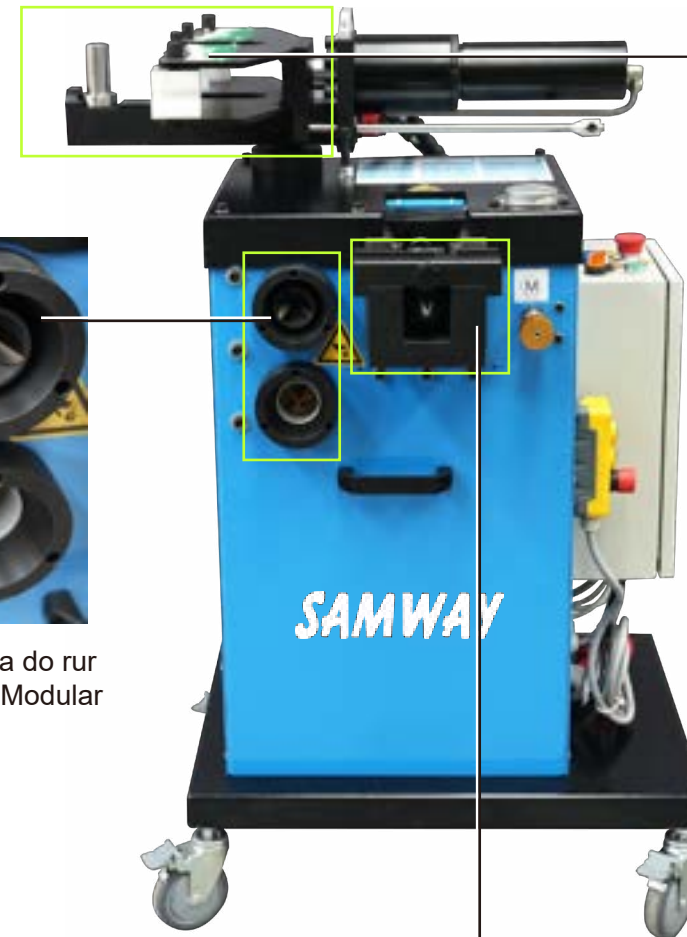
- 2" Hydraulic Hose
- N° OF CHARACTERS: 16
- CHARACTER HEIGHT: 3mm
- Optional Pneumatic Control
- Special Character or logo upon request
- L*W*H: 500*250*500mm
- Weight: 26KG

4200 zł + VAT



Marking HD

T642V - urządzenie 4 w 1



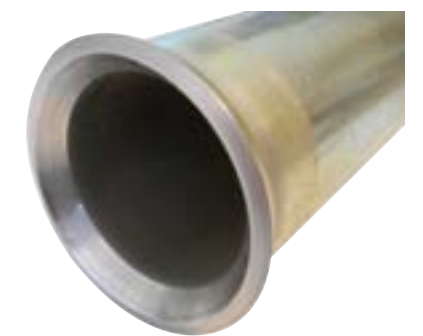
Gratowarka do rur
Deburring Modular



Giętarka do rur * Bending Modular



Moduł do flarowania
Flaring Modular



TECHNICAL DATA

- Max capacity steel tube: 6-42
- Steel pipe: 1/4 - 1 1/4"
- Power: 0.55(400V 3 Phase)
- L*W*H: 850*500*1100
- Weight: 100KG

FEATURES

- Professional Tube Bending
- Optional Tube Deburring Tool
- Optional Flaring Tool
- Optional Tube Deburring